

Double-locking security
as standard

EXPANDASTORE



BUILDING CHECKLIST

	Expandastore™	Standard Store
Flat-packed	✓	X
Man-portable	✓	X
Flexible	✓	X
Simple Assembly	✓	X
Modular	✓	X



FLAT-PACKED, MAN-PORTABLE, MODULAR BUILDINGS

EXPANDAKABIN



office or workshop

EXPANDACHEM



hazardous materials store

EXPANDASTORE



storage building

Ideal for siting in locations with limited access. Light enough to be man handled and with components that are small enough to fit through small passageways.

YOUR AUTHORISED EXPANDARANGE™ DEALER IS:



FLAT-PACKED, MAN-PORTABLE, MODULAR BUILDINGS



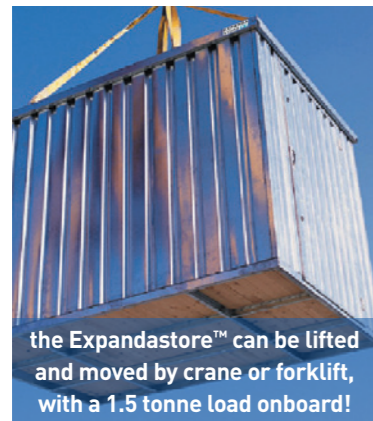
the unique storage building

...that can go anywhere!

brochure design by oceanberetfoot

EXPANDASTORE

CUT



the Expandastore™ can be lifted and moved by crane or forklift, with a 1.5 tonne load onboard!



smart external appearance



integrated gutter system

EXPANDASTORE

The flat-pack, man-portable, modular storage building

All components are **totally man-portable** and can be carried into locations with **restricted access** for its **simple assembly**

The **only** tools required are a **socket set and screw driver**

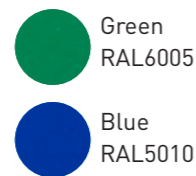
The strong profiled steel building is manufactured in **galvanized steel** for long life and features **double locks** on the doors for added security

Units can be linked together to form larger areas of storage space, side to side or end to end

If not in use the **Expandastore™ can be returned** to its **flat-packed** form for transportation or easy stackable storage

All parts of an Expandastore™ can be replaced

Optional protective powder coated finishes are available:



(other special colours available on request)



2m Expandastore™ model shown



arrives flat-packed



man-portable



simple to assemble



ready for use

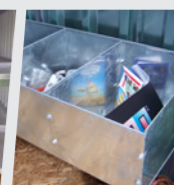


Expandastore™ accessories

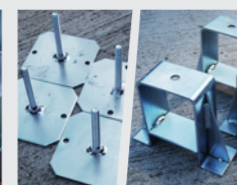
EASY-FIT SHELVING



TOOL BINS



LEVELLING & FORKLIFT FEET



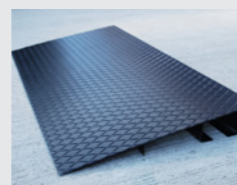
DOOR CLOSER



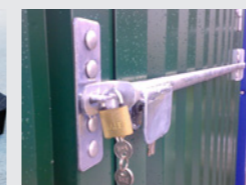
LINKING KIT



RAMP



LOCKING BAR



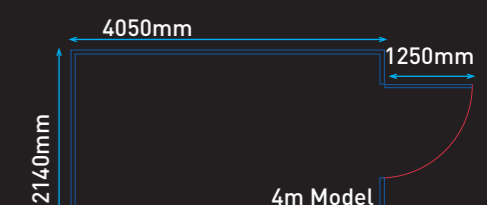
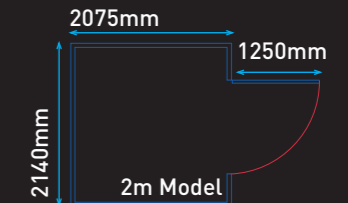
WALL HOOK



Basic sizes (all expandable)



Length: 2m or 3m or 4m
Width: 2.1m
Height: 2.1m



Technical specification

DESCRIPTION

Uninsulated demountable storage container.

DIMENSIONS

All flat packed units are 300mm high
All assembled units are 2140mm high

Type	Length	Width	Weight
2m Model	2075mm	2140mm	325kg
3m Model	3060mm	2140mm	400kg
4m Model	4050mm	2140mm	500kg

Doors fitted in the long side are a no-cost option

CONSTRUCTION COMPONENTS

1. Chassis
2. Side wall panels
3. Roof panel
4. Door panel
5. Fastening elements

CHASSIS & FLOOR

Pre-assembled 18mm thick Grade 3 OSB Norbord screwed to a galvanized steel box profile frame.

SIDE WALLS, DOOR & ROOF PANEL

0.73 mm box profile galvanized steel panels, strengthened with spot welded galvanized steel frame sections at the edges of each panel. The roof section has two integral gutters for effective rainwater dispersal to all four corners of the container. The door is pre-mounted into the frame on galvanized hinges, complete with two 64mm Euro deadlocks with replaceable cylinders and a central roller catch. Door width: 1250mm, hinged on the right, outward opening.

FASTENING COMPONENTS

Four 12 mm diameter rods are used to connect the lifting eyes to the chassis. The wall panels are fixed to the chassis with 13mm bolts into captive nuts. Additional roof security bolts are supplied to prevent external access.

PACKING

All components of the Expandastore™ are packed to ensure that they are not damaged during transportation, loading and unloading under normal circumstances. The smallest transportation cube is achieved in this packing process.

EXPANDABLE

Units can be enlarged by the addition of further units. A special linking kit is available to extend side to side or end to end.

Due to our continuous product development programme, we reserve the right to change the specifications without prior notice.